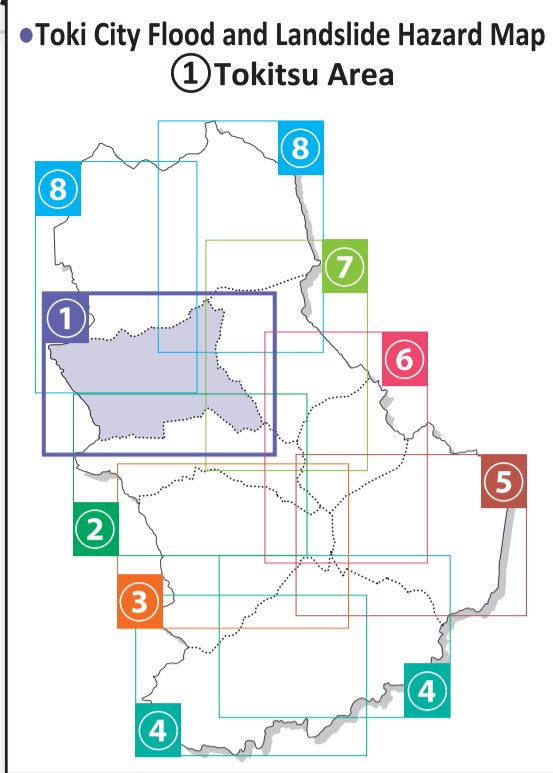
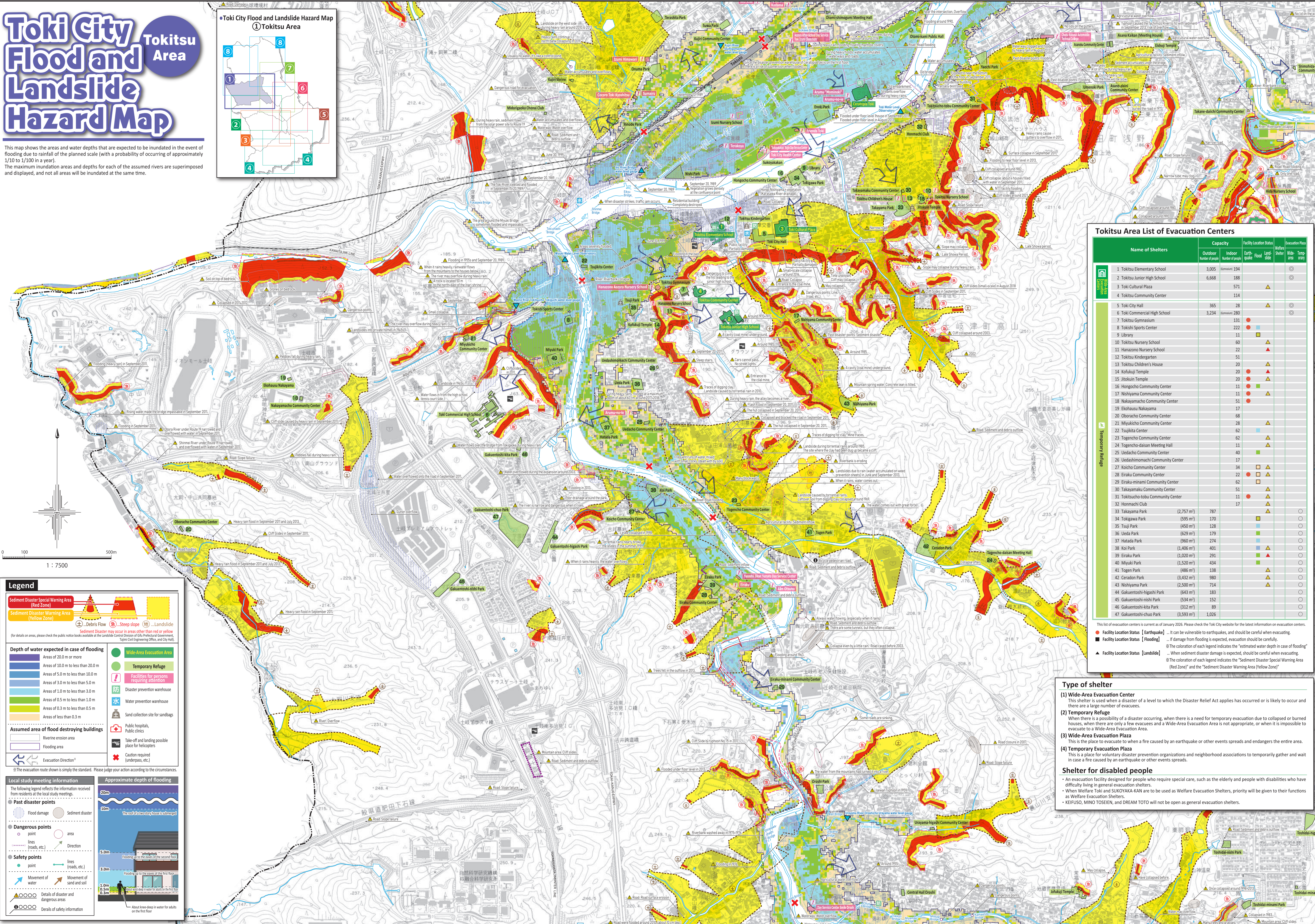


Toki City Flood and Landslide Hazard Map

Tokitsu Area



This map shows the areas and water depths that are expected to be inundated in the event of flooding due to rainfall of the planned scale (with a probability of occurring of approximately 1/10 to 1/100 in a year).
The maximum inundation areas and depths for each of the assumed rivers are superimposed and displayed, and not all areas will be inundated at the same time.



Tokitsu Area List of Evacuation Centers

Name of Shelters	Capacity		Facility Location Status	Evacuation Plaza
	Outdoor (number of people)	Indoor (number of people)		
1 Tokitsu Elementary School	3,005	194	Earthquake	Wide-Area Evacuation Plaza
2 Tokitsu Junior High School	6,668	188	Flooding	Wide-Area Evacuation Plaza
3 Toki Cultural Plaza		571	Flooding	Wide-Area Evacuation Plaza
4 Tokitsu Community Center		114	Flooding	Wide-Area Evacuation Plaza
5 Toki City Hall	365	28	Flooding	Wide-Area Evacuation Plaza
6 Toki Commercial High School	3,234	280	Flooding	Wide-Area Evacuation Plaza
7 Tokitsu Gymnasium		131	Flooding	Wide-Area Evacuation Plaza
8 Tokishi Sports Center		222	Flooding	Wide-Area Evacuation Plaza
9 Library		11	Flooding	Wide-Area Evacuation Plaza
10 Tokitsu Nursery School		60	Flooding	Wide-Area Evacuation Plaza
11 Hanazono Nursery School		22	Flooding	Wide-Area Evacuation Plaza
12 Tokitsu Kindergarten		51	Flooding	Wide-Area Evacuation Plaza
13 Tokitsu Children's House		20	Flooding	Wide-Area Evacuation Plaza
14 Kofukuji Temple		20	Flooding	Wide-Area Evacuation Plaza
15 Itojin Temple		20	Flooding	Wide-Area Evacuation Plaza
16 Honcho Community Center		11	Flooding	Wide-Area Evacuation Plaza
17 Nishiyama Community Center		11	Flooding	Wide-Area Evacuation Plaza
18 Nakayama Community Center		51	Flooding	Wide-Area Evacuation Plaza
19 Ekohasu Nakayama		17	Flooding	Wide-Area Evacuation Plaza
20 Oboraku Community Center		68	Flooding	Wide-Area Evacuation Plaza
21 Miyukicho Community Center		28	Flooding	Wide-Area Evacuation Plaza
22 Tsujikita Center		62	Flooding	Wide-Area Evacuation Plaza
23 Togencho Community Center		62	Flooding	Wide-Area Evacuation Plaza
24 Togencho-daisan Meeting Hall		11	Flooding	Wide-Area Evacuation Plaza
25 Uedahoko Community Center		40	Flooding	Wide-Area Evacuation Plaza
26 Uedahoko Community Center		17	Flooding	Wide-Area Evacuation Plaza
27 Kocho Community Center		34	Flooding	Wide-Area Evacuation Plaza
28 Eiraku Community Center		22	Flooding	Wide-Area Evacuation Plaza
29 Eiraku-minami Community Center		62	Flooding	Wide-Area Evacuation Plaza
30 Takayama Community Center		51	Flooding	Wide-Area Evacuation Plaza
31 Tokitsu-tobu Community Center		11	Flooding	Wide-Area Evacuation Plaza
32 Honmachi Club		17	Flooding	Wide-Area Evacuation Plaza
33 Takayama Park	(2,757 m ²)	787	Flooding	Wide-Area Evacuation Plaza
34 Tokigawa Park	(595 m ²)	170	Flooding	Wide-Area Evacuation Plaza
35 Tsuji Park	(450 m ²)	128	Flooding	Wide-Area Evacuation Plaza
36 Ueda Park	(629 m ²)	179	Flooding	Wide-Area Evacuation Plaza
37 Hatada Park	(960 m ²)	274	Flooding	Wide-Area Evacuation Plaza
38 Koi Park	(1,406 m ²)	401	Flooding	Wide-Area Evacuation Plaza
39 Eiraku Park	(1,020 m ²)	291	Flooding	Wide-Area Evacuation Plaza
40 Miyuki Park	(1,520 m ²)	434	Flooding	Wide-Area Evacuation Plaza
41 Togen Park	(486 m ²)	138	Flooding	Wide-Area Evacuation Plaza
42 Ceradon Park	(3,432 m ²)	980	Flooding	Wide-Area Evacuation Plaza
43 Nishiyama Park	(2,500 m ²)	714	Flooding	Wide-Area Evacuation Plaza
44 Gakuentoshi-higashi Park	(643 m ²)	183	Flooding	Wide-Area Evacuation Plaza
45 Gakuentoshi-nishi Park	(534 m ²)	152	Flooding	Wide-Area Evacuation Plaza
46 Gakuentoshi-kita Park	(312 m ²)	89	Flooding	Wide-Area Evacuation Plaza
47 Gakuentoshi-chuo Park	(3,593 m ²)	1,026	Flooding	Wide-Area Evacuation Plaza

This list of evacuation centers is current as of January 2026. Please check the Toki City website for the latest information on evacuation centers.
 ● Facility Location Status [Earthquake] ... It can be vulnerable to earthquakes, and should be careful when evacuating.
 ● Facility Location Status [Flooding] ... If damage from flooding is expected, evacuation should be carefully.
 ▲ Facility Location Status [Landslide] ... When sediment disaster damage is expected, should be careful when evacuating.
 ※ The coloration of each legend indicates the "estimated water depth in case of flooding"
 ※ The coloration of each legend indicates the "Sediment Disaster Special Warning Area (Red Zone)" and the "Sediment Disaster Warning Area (Yellow Zone)".

Type of shelter

- (1) Wide-Area Evacuation Center**
This shelter is used when a disaster of a level to which the Disaster Relief Act applies has occurred or is likely to occur and there are a large number of evacuees.
 - (2) Temporary Refuge**
When there is a possibility of a disaster occurring, when there is a need for temporary evacuation due to collapsed or burned houses, when there are only a few evacuees and a Wide-Area Evacuation Area is not appropriate, or when it is impossible to evacuate to a Wide-Area Evacuation Area.
 - (3) Wide-Area Evacuation Plaza**
This is the place to evacuate to when a fire caused by an earthquake or other events spreads and endangers the entire area.
 - (4) Temporary Evacuation Plaza**
This is a place for voluntary disaster prevention organizations and neighborhood associations to temporarily gather and wait in case a fire caused by an earthquake or other events spreads.
- Shelter for disabled people**
 - An evacuation facility designed for people who require special care, such as the elderly and people with disabilities who have difficulty living in general evacuation shelters.
 - When Welfare Toki and SUKUYAKA-KAN are to be used as Welfare Evacuation Shelters, priority will be given to their functions as Welfare Evacuation Shelters.
 - KEIFUSO, MINO TOSEIEN, and DREAM TOTO will not be open as general evacuation shelters.

Legend

Sediment Disaster Special Warning Area (Red Zone)
Sediment Disaster Warning Area (Yellow Zone)

① Debris flow ② Steep slope ③ Landslide

Sediment Disaster may occur in areas other than red or yellow (for details on areas, please check the public notice books available at the Landslide Control Division of Gifu Prefectural Government, Toki City Engineering Office, and City Hall).

Depth of water expected in case of flooding

- Areas of 20.0 m or more
- Areas of 10.0 m to less than 20.0 m
- Areas of 5.0 m to less than 10.0 m
- Areas of 3.0 m to less than 5.0 m
- Areas of 1.0 m to less than 3.0 m
- Areas of 0.5 m to less than 1.0 m
- Areas of 0.3 m to less than 0.5 m
- Areas of less than 0.3 m

Assumed area of flood destroying buildings

- Riverine erosion area
- Flooding area

Evacuation Direction

※ The evacuation route shown is simply the standard. Please judge your action according to the circumstances.

Local study meeting information

The following legend reflects the information received from residents at the local study meetings.

- Past disaster points**
 ● Flood damage ● Sediment disaster
- Dangerous points**
 ○ point ○ area
 --- lines (roads, etc.)
 → Direction
- Safety points**
 ● point --- lines (roads, etc.)
 → Movement of water
 → Movement of sand and soil
- Details of disaster and dangerous areas
- Details of safety information

Approximate depth of flooding

- 20m: The roof of a two-story house is submerged
- 10m: Flooding up to the eaves (the second floor)
- 5.0m: Flooding up to the eaves (the first floor)
- 3.0m: Flooding up to the eaves of the first floor
- 1.0m: About knee-deep in water for adults on the first floor
- 0.5m
- 0.3m