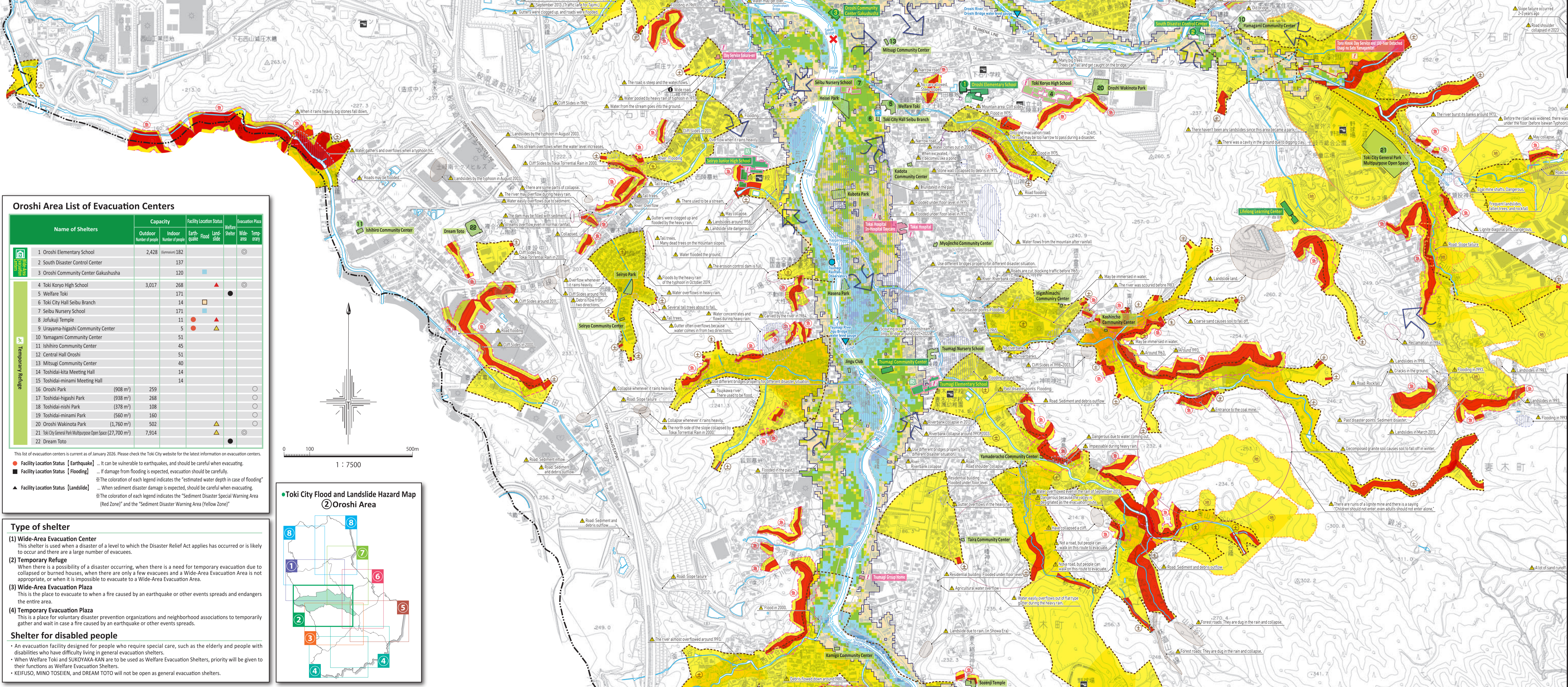


Oroshi Area Toki City Flood and Landslide Hazard Map

This map shows the areas and water depths that are expected to be inundated in the event of flooding due to rainfall of the planned scale (with a probability of occurring of approximately 1/10 to 1/100 in a year). The maximum inundation areas and depths for each of the assumed rivers are superimposed and displayed, and not all areas will be inundated at the same time.



Legend

Sediment Disaster Special Warning Area (Red Zone)
Sediment Disaster Warning Area (Yellow Zone)

for details on areas, please check the public notice books available at the Landslide Control Division of City Planning Department, Toki City Engineering Office, and City Hall.

Depth of water expected in case of flooding

- Areas of 20.0 m or more
- Areas of 10.0 m to less than 20.0 m
- Areas of 5.0 m to less than 10.0 m
- Areas of 3.0 m to less than 5.0 m
- Areas of 1.0 m to less than 3.0 m
- Areas of 0.5 m to less than 1.0 m
- Areas of 0.3 m to less than 0.5 m
- Areas of less than 0.3 m

Assumed area of flood destroying buildings

- Riverine erosion area
- Flooding area

Local study meeting information

The following legend reflects the information received from residents at the local study meetings.

- Past disaster points**
 - Flood damage
 - Sediment disaster
- Dangerous points**
 - lines (roads, etc.)
 - Direction
- Safety points**
 - point
 - lines (roads, etc.)
 - Movement of water
 - Movement of sand and soil
 - Details of disaster and dangerous areas
 - Details of safety information

Approximate depth of flooding

- 20m
- 10m
- 5.0m
- 3.0m
- 1.0m
- 0.5m
- 0.3m

The evacuation route shown is simply the standard. Please judge your action according to the circumstances.

Oroshi Area List of Evacuation Centers

Name of Shelters	Capacity		Facility Location Status	Evacuation Plan
	Outdoor number of seats	Indoor number of seats		
1 Oroshi Elementary School	2,428	182	●	○
2 South Disaster Control Center		137	●	○
3 Oroshi Community Center Gakushusha		120	●	○
4 Toki Koryo High School	3,017	268	●	○
5 Welfare Toki		171	●	○
6 Toki City Hall Seibu Branch		14	●	○
7 Seibu Nursery School		171	●	○
8 Jofukui Temple		11	●	○
9 Urayama-higashi Community Center		5	●	○
10 Yamagami Community Center		51	●	○
11 Ishihoro Community Center		45	●	○
12 Central Hall Oroshi		51	●	○
13 Mitsugi Community Center		40	●	○
14 Toshida-kita Meeting Hall		14	●	○
15 Toshida-minami Meeting Hall		14	●	○
16 Oroshi Park	(908 m ²)	259	●	○
17 Toshida-higashi Park	(938 m ²)	268	●	○
18 Toshida-nishi Park	(378 m ²)	108	●	○
19 Toshida-minami Park	(560 m ²)	160	●	○
20 Oroshi Wakinota Park	(1,760 m ²)	502	●	○
21 Toki City General Park Multipurpose Open Space	(27,700 m ²)	7,914	●	○
22 Dream Toto			●	○

This list of evacuation centers is current as of January 2026. Please check the Toki City website for the latest information on evacuation centers.

● Facility Location Status [Earthquake] ... It can be vulnerable to earthquakes, and should be careful when evacuating.
 ● Facility Location Status [Flooding] ... If damage from flooding is expected, evacuation should be carefully.
 ▲ Facility Location Status [Landslide] ... When sediment disaster damage is expected, should be careful when evacuating.
 ○ The coloration of each legend indicates the "estimated water depth in case of flooding"
 ○ The coloration of each legend indicates the "Sediment Disaster Special Warning Area (Red Zone)" and the "Sediment Disaster Warning Area (Yellow Zone)"

Type of shelter

- Wide-Area Evacuation Center**
This shelter is used when a disaster of a level to which the Disaster Relief Act applies has occurred or is likely to occur and there are a large number of evacuees.
- Temporary Refuge**
When there is a possibility of a disaster occurring, when there is a need for temporary evacuation due to collapsed or burned houses, when there are only a few evacuees and a Wide-Area Evacuation Area is not appropriate, or when it is impossible to evacuate to a Wide-Area Evacuation Area.
- Wide-Area Evacuation Plaza**
This is the place to evacuate to when a fire caused by an earthquake or other events spreads and endangers the entire area.
- Temporary Evacuation Plaza**
This is a place for voluntary disaster prevention organizations and neighborhood associations to temporarily gather and wait in case a fire caused by an earthquake or other events spreads.

Shelter for disabled people

- An evacuation facility designed for people who require special care, such as the elderly and people with disabilities who have difficulty living in general evacuation shelters.
- When Welfare Toki and SUKOYAKA-KAN are to be used as Welfare Evacuation Shelters, priority will be given to their functions as Welfare Evacuation Shelters.
- KEIUSO, MINO TOSEIEN, and DREAM TOTO will not be open as general evacuation shelters.

