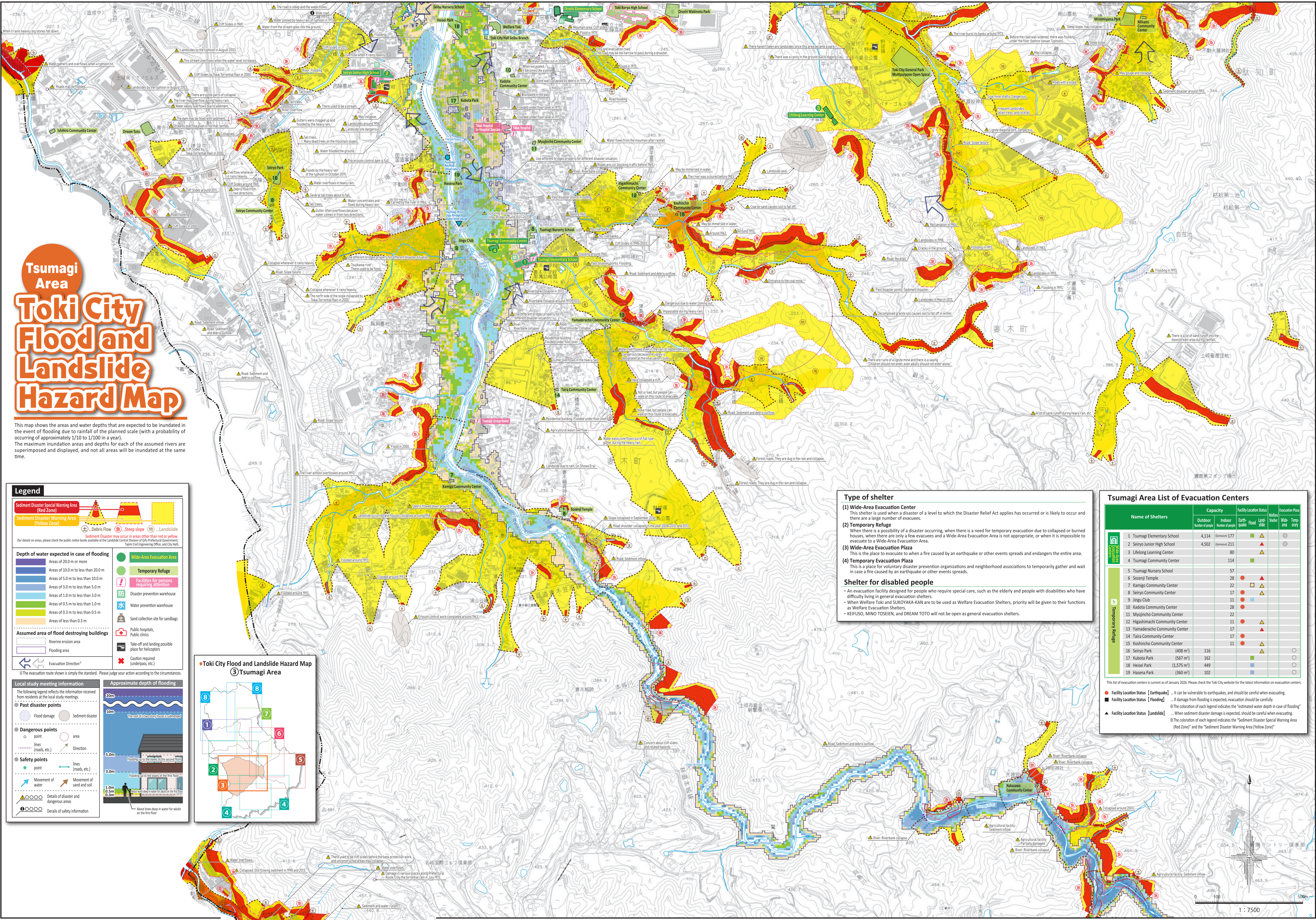


# Tsumagi Area Toki City Flood and Landslide Hazard Map

This map shows the areas and water depths that are expected to be inundated in the event of flooding due to rainfall of the planned scale (with a probability of occurring of approximately 1/10 to 1/100 in a year). The maximum inundation areas and depths for each of the assumed rivers are superimposed and displayed, and not all areas will be inundated at the same time.



### Legend

**Sediment Disaster Special Warning Area (Red Zone)**  
**Sediment Disaster Warning Area (Yellow Zone)**

Debris flow, Steep slope, Landslide

**Depth of water expected in case of flooding**

- Areas of 20.0 m or more
- Areas of 10.0 m to less than 20.0 m
- Areas of 5.0 m to less than 10.0 m
- Areas of 3.0 m to less than 5.0 m
- Areas of 1.0 m to less than 3.0 m
- Areas of 0.5 m to less than 1.0 m
- Areas of 0.3 m to less than 0.5 m
- Areas of less than 0.3 m

**Assumed area of flood destroying buildings**

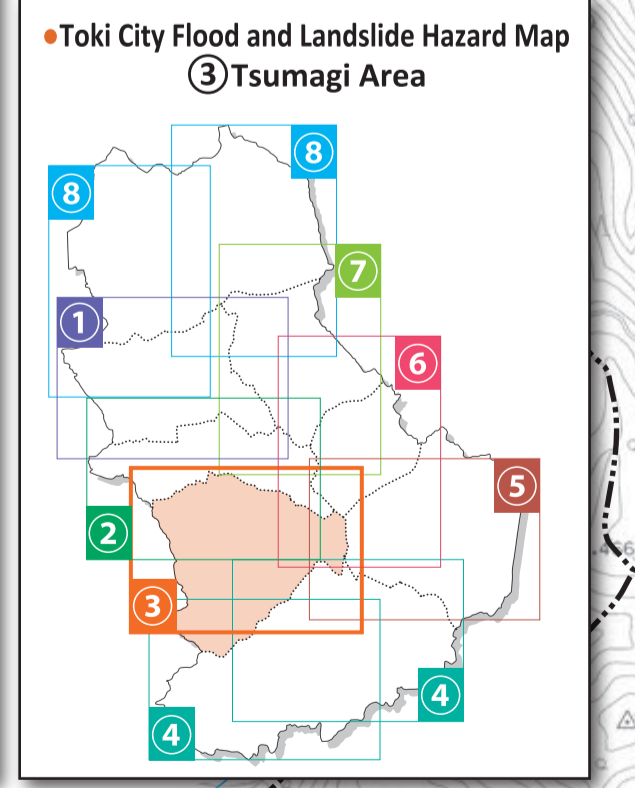
- Riverine erosion area
- Flooding area

**Evacuation Direction**

**Local study meeting information**

**Approximate depth of flooding**

- 20m: The roof of a two-story house is submerged
- 10m: Flooding up to the eaves of the second floor
- 5.0m: Flooding up to the eaves of the first floor
- 3.0m: Flooding up to the water level in the first floor
- 1.0m: About knee-deep in water for adults on the first floor
- 0.5m: 0.3m



### Type of shelter

- Wide-Area Evacuation Center**  
This shelter is used when a disaster of a level to which the Disaster Relief Act applies has occurred or is likely to occur and there are a large number of evacuees.
- Temporary Refuge**  
When there is a possibility of a disaster occurring, when there is a need for temporary evacuation due to collapsed or burned houses, when there are only a few evacuees and a Wide-Area Evacuation Area is not appropriate, or when it is impossible to evacuate to a Wide-Area Evacuation Area.
- Wide-Area Evacuation Plaza**  
This is the place to evacuate to when a fire caused by an earthquake or other events spreads and endangers the entire area.
- Temporary Evacuation Plaza**  
This is a place for voluntary disaster prevention organizations and neighborhood associations to temporarily gather and wait in case a fire caused by an earthquake or other events spreads.

**Shelter for disabled people**

- An evacuation facility designed for people who require special care, such as the elderly and people with disabilities who have difficulty living in general evacuation shelters.
- When Welfare Toki and SUKUYAKA-KAN are to be used as Welfare Evacuation Shelters, priority will be given to their functions as Welfare Evacuation Shelters.
- KEIFUSO, MINO TOSEIEN, and DREAM TOTO will not be open as general evacuation shelters.

### Tsumagi Area List of Evacuation Centers

Name of Shelters	Capacity		Facility Location Status			Shelter		Evacuation Plaza
	Outdoor (human per person)	Indoor (human per person)	Earthquake	Flood	Landslide	Wide-area	Temporary	
1 Tsumagi Elementary School	4,114	Remainder 177	▲	▲	▲	○	◎	
2 Seiryō Junior High School	4,502	Remainder 211	▲	▲	▲	○	◎	
3 Lifelong Learning Center		80	▲	▲	▲	○	◎	
4 Tsumagi Community Center		114	▲	▲	▲	○	◎	
5 Tsumagi Nursery School		57	●	▲	▲	○	○	
6 Sozenji Temple		28	●	▲	▲	○	○	
7 Kamigo Community Center		22	●	▲	▲	○	○	
8 Seiryō Community Center		17	●	▲	▲	○	○	
9 Jingu Club		11	●	▲	▲	○	○	
10 Kadota Community Center		28	●	▲	▲	○	○	
11 Myojincho Community Center		22	●	▲	▲	○	○	
12 Higashimachi Community Center		17	●	▲	▲	○	○	
13 Yamaderacho Community Center		11	●	▲	▲	○	○	
14 Taira Community Center		17	●	▲	▲	○	○	
15 Koshincho Community Center		11	●	▲	▲	○	○	
16 Seiryō Park (408 m²)	116		●	▲	▲	○	○	
17 Kubota Park (567 m²)	162		●	▲	▲	○	○	
18 Heisei Park (1,575 m²)	449		●	▲	▲	○	○	
19 Hasena Park (360 m²)	102		●	▲	▲	○	○	

This list of evacuation centers is current as of January 2026. Please check the Toki City website for the latest information on evacuation centers.

**Facility Location Status [Earthquake]** ... It can be vulnerable to earthquakes, and should be careful when evacuating.  
**Facility Location Status [Flooding]** ... If damage from flooding is expected, evacuation should be carefully.  
**Facility Location Status [Landslide]** ... If the damage of each legend indicates the "estimated water depth in case of flooding"  
**Facility Location Status [Landslide]** ... When sediment disaster damage is expected, should be careful when evacuating  
◎ The coloration of each legend indicates the "Sediment Disaster Special Warning Area (Red Zone)" and the "Sediment Disaster Warning Area (Yellow Zone)"