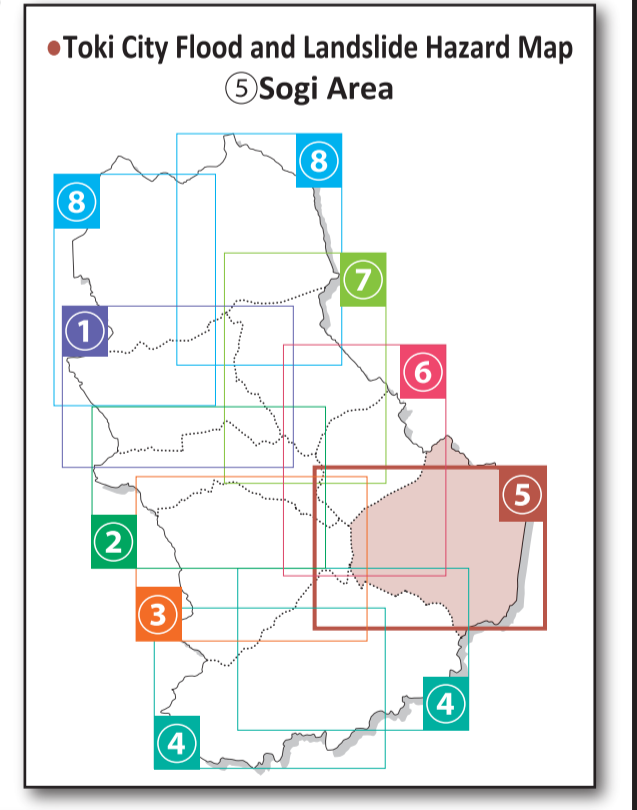
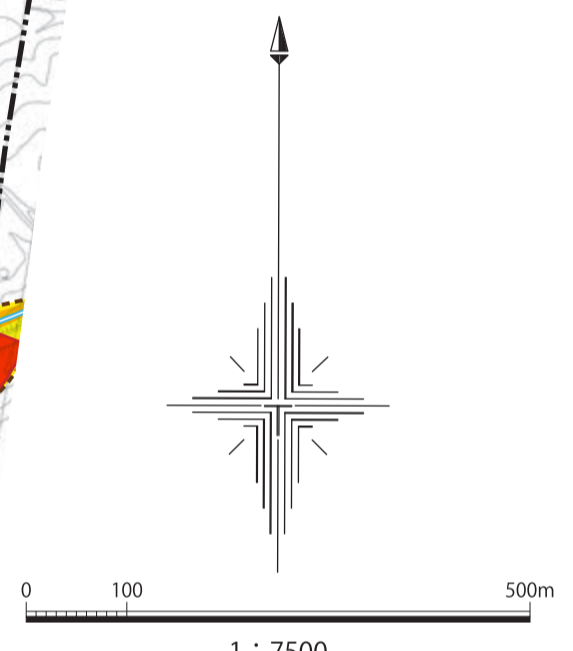
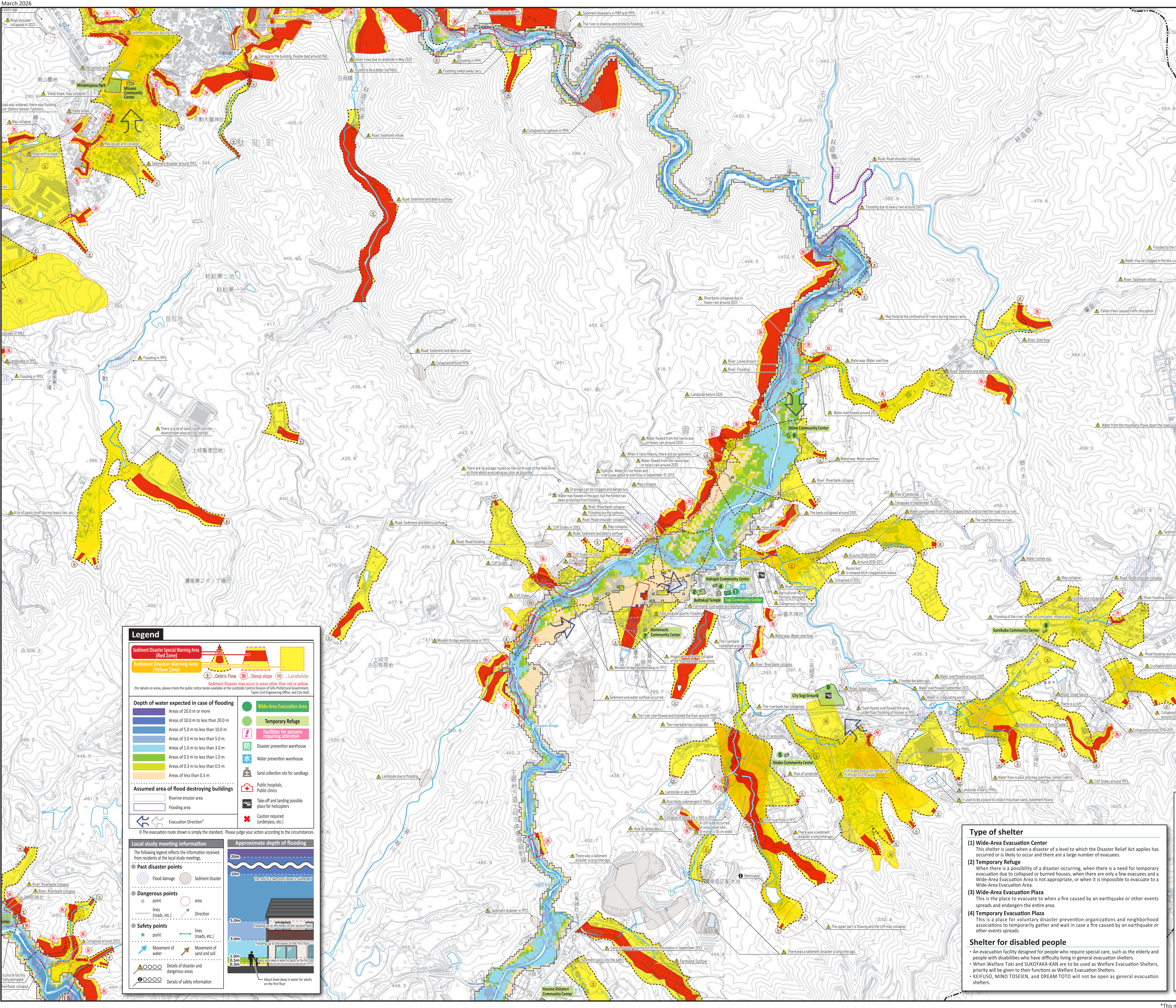


Toki City Flood and Landslide Hazard Map

Sogi Area

This map shows the areas and water depths that are expected to be inundated in the event of flooding due to rainfall of the planned scale (with a probability of occurring of approximately 1/10 to 1/100 in a year). The maximum inundation areas and depths for each of the assumed rivers are superimposed and displayed, and not all areas will be inundated at the same time.



Legend

Sediment Disaster Special Warning Area (Red Zone)
Sediment Disaster Warning Area (Yellow Zone)

Depth of water expected in case of flooding

- Areas of 20.0 m or more
- Areas of 10.0 m to less than 20.0 m
- Areas of 5.0 m to less than 10.0 m
- Areas of 3.0 m to less than 5.0 m
- Areas of 1.0 m to less than 3.0 m
- Areas of 0.5 m to less than 1.0 m
- Areas of 0.3 m to less than 0.5 m
- Areas of less than 0.3 m

Assumed area of flood destroying buildings

- Riverine erosion area
- Flooding area

Evacuation Direction

Local study meeting information

- Past disaster points
- Dangerous points
- Safety points

Approximate depth of flooding

- 20m
- 10m
- 5.0m
- 3.0m
- 1.0m
- 0.5m
- 0.3m

Type of shelter

- Wide-Area Evacuation Center**
This shelter is used when a disaster of a level to which the Disaster Relief Act applies has occurred or is likely to occur and there are a large number of evacuees.
- Temporary Refuge**
When there is a possibility of a disaster occurring, when there is a need for temporary evacuation due to collapsed or burned houses, when there are only a few evacuees and a Wide-Area Evacuation Area is not appropriate, or when it is impossible to evacuate to a Wide-Area Evacuation Area.
- Wide-Area Evacuation Plaza**
This is the place to evacuate to when a fire caused by an earthquake or other events spreads and endangers the entire area.
- Temporary Evacuation Plaza**
This is a place for voluntary disaster prevention organizations and neighborhood associations to temporarily gather and wait in case a fire caused by an earthquake or other events spreads.

Shelter for disabled people

- An evacuation facility designed for people who require special care, such as the elderly and people with disabilities who have difficulty living in general evacuation shelters.
- When Welfare Toki and SUKUYAKA-KAN are to be used as Welfare Evacuation Shelters, priority will be given to their functions as Welfare Evacuation Shelters.
- KEIRUSO, MINO TOSEIEN, and DREAM TOTO will not be open as general evacuation shelters.

Sogi Area List of Evacuation Centers

Name of Shelters	Capacity		Facility Location Status			Evacuation Plaza
	Outdoor Number of people	Indoor Number of people	Earthquake	Flood	Landslide	
1 Sogi Community Center		97				
2 Buttkouji Temple	80	22				
3 Ransen Nogyo Shuraku Kenshu Center	14	14				
4 Nakagiri Community Center	11	11				
5 Onaka Community Center	11	11				
6 Shimo Community Center	11	11				
7 Kamimachi Community Center	11	11				
8 Sumikubo Community Center	17	17				
9 City Sogi Ground	(10,368 m ²)	2,962				

This list of evacuation centers is current as of January 2026. Please check the Toki City website for the latest information on evacuation centers.

Facility Location Status [Flooding] ... It can be vulnerable to flooding is expected, and should be careful when evacuating.
Facility Location Status [Landslide] ... When sediment disaster damage is expected, should be careful when evacuating.
Evacuation Plaza ... When sediment disaster damage is expected, should be careful when evacuating.
Shelter for disabled people ... The coloration of each legend indicates the "estimated water depth in case of flooding".
Evacuation Direction ... The coloration of each legend indicates the "Sediment Disaster Special Warning Area (Red Zone)" and the "Sediment Disaster Warning Area (Yellow Zone)".

*This map has been created based on the Toki City Urban Planning Base Map (scale 1:10,000, created in March 2023).