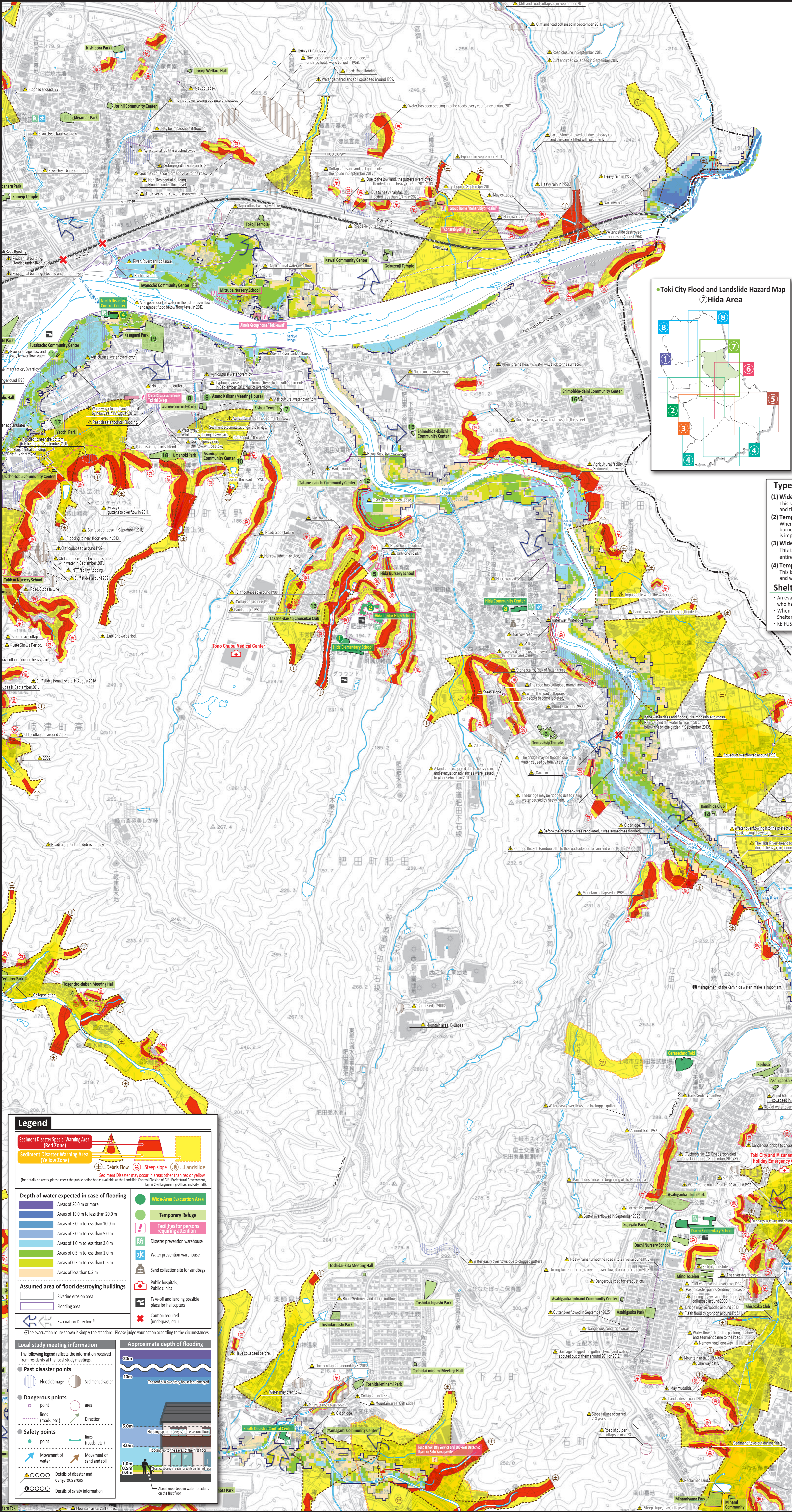


Toki City Flood and Landslide Hazard Map

Hida Area

This map shows the areas and water depths that are expected to be inundated in the event of flooding due to rainfall of the planned scale (with a probability of occurring of approximately 1/10 to 1/100 in a year). The maximum inundation areas and depths for each of the assumed rivers are superimposed and displayed, and not all areas will be inundated at the same time.

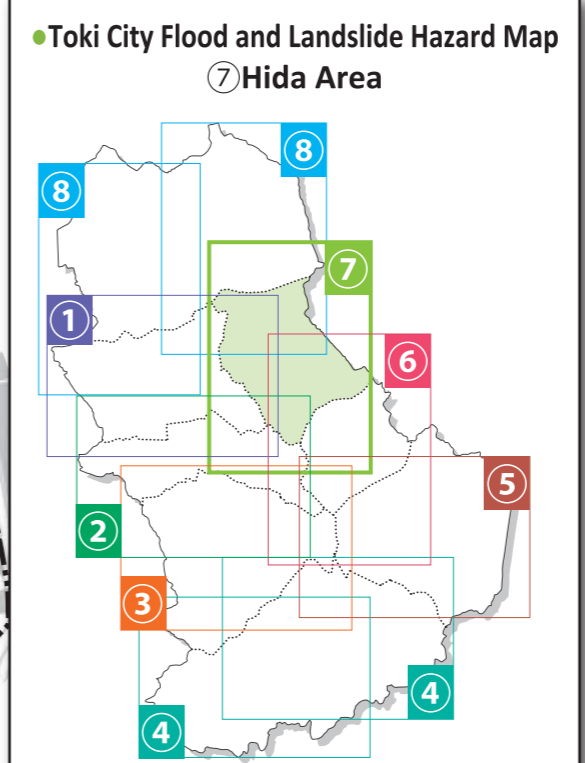


Hida Area List of Evacuation Centers

Name of Shelters	Capacity		Facility Location Status			Evacuation Plaza
	Outdoor Number of people	Indoor Number of people	Earthquake	Flood	Landslide	
1 Hida Elementary School	3,428	1,160	●	●	○	○
2 Hida Junior High School	4,514	1,177	●	●	○	○
3 Hida Community Center		171	●	●	○	○
4 North Disaster Control Center		62	●	●	○	○
5 Hida Nursery School		200	●	●	○	○
6 Tempukaji Temple		120	●	●	○	○
7 Eishoji Temple		80	●	●	○	○
8 Asanoku Community Center		40	●	●	○	○
9 Asano Kaikan (Meeting House)		51	●	●	○	○
10 Asano-daini Community Center		22	●	●	○	○
11 Futabachi Community Center		17	●	●	○	○
12 Takane-daiichi Community Center		11	●	●	○	○
13 Takane-daisan Chonakai Club		17	●	●	○	○
14 Kamihida Club		22	●	●	○	○
15 Shimohida-daiichi Community Center		17	●	●	○	○
16 Shimohida-daini Community Center		22	●	●	○	○
17 Yaochi Park (1,564 m ²)	446		●	●	○	○
18 Umenoki Park (1,848 m ²)	528		●	●	○	○
19 Kasagami Park (729 m ²)	208		●	●	○	○

This list of evacuation centers is current as of January 2026. Please check the Toki City website for the latest information on evacuation centers.

- Facility Location Status [Earthquake] ... If it can be vulnerable to earthquakes, and should be careful when evacuating.
- Facility Location Status [Flooding] ... If damage from flooding is expected, evacuation should be careful.
- ▲ Facility Location Status [Landslide] ... When sediment disaster damage is expected, should be careful when evacuating. The coloration of each legend indicates the "Sediment Disaster Special Warning Area (Red Zone)" and the "Sediment Disaster Warning Area (Yellow Zone)".



Type of shelter

- (1) Wide-Area Evacuation Center**
This shelter is used when a disaster of a level to which the Disaster Relief Act applies has occurred or is likely to occur and there are a large number of evacuees.
 - (2) Temporary Refuge**
When there is a possibility of a disaster occurring, when there is a need for temporary evacuation due to collapsed or burned houses, when there are only a few evacuees and a Wide-Area Evacuation Area is not appropriate, or when it is impossible to evacuate to a Wide-Area Evacuation Area.
 - (3) Wide-Area Evacuation Plaza**
This is the place to evacuate to when a fire caused by an earthquake or other events spreads and endangers the entire area.
 - (4) Temporary Evacuation Plaza**
This is a place for voluntary disaster prevention organizations and neighborhood associations to temporarily gather and wait in case of a fire caused by an earthquake or other events spreads.
- Shelter for disabled people**
- An evacuation facility designed for people who require special care, such as the elderly and people with disabilities who have difficulty living in general evacuation shelters.
 - When Welfare Toki, Toki City Welfare Facility HIDAMARI, and SUKOYAKA-KAN will be used as Welfare Evacuation Shelters, priority will be given to their functions as Welfare Evacuation Shelters.
 - KEFUSO, MINO TOSEIEN, and DREAM TOTO will not be open as general evacuation shelters.

Legend

- Sediment Disaster Special Warning Area (Red Zone)
- Sediment Disaster Warning Area (Yellow Zone)
- Depth of water expected in case of flooding:
 - Areas of 20.0 m or more
 - Areas of 10.0 m to less than 20.0 m
 - Areas of 5.0 m to less than 10.0 m
 - Areas of 3.0 m to less than 5.0 m
 - Areas of 1.0 m to less than 3.0 m
 - Areas of 0.5 m to less than 1.0 m
 - Areas of 0.3 m to less than 0.5 m
 - Areas of less than 0.3 m
- Assumed area of flood destroying buildings:
 - Riverine erosion area
 - Flooding area
- Evacuation Direction

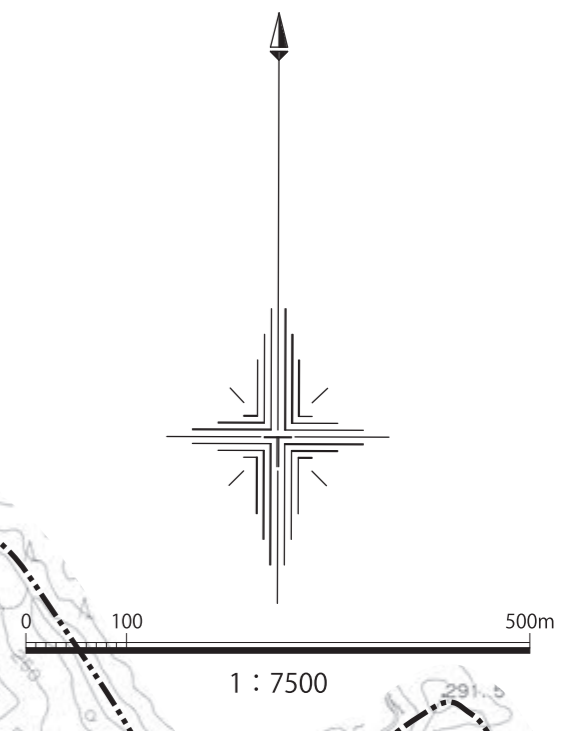
Local study meeting information

The following legend reflects the information received from residents at the local study meetings.

- Past disaster points**
 - Flood damage
 - Sediment disaster
- Dangerous points**
 - point
 - area
 - lines (roads, etc.)
 - Direction
- Safety points**
 - point
 - lines (roads, etc.)
 - Movement of water
 - Movement of sand and soil
 - Details of disaster and dangerous areas
 - Details of safety information

Approximate depth of flooding

- 20m: The roof of a two-story house is submerged.
- 10m: Flooding up to the eaves of the second floor.
- 5.0m: Flooding up to the eaves of the first floor.
- 3.0m: About knee-deep in water for adults on the first floor.
- 1.0m: About knee-deep in water for children on the first floor.
- 0.3m: About knee-deep in water for adults on the first floor.



*This map has been created based on the Toki City Urban Planning Base Map (scale 1:10,000, created in March 2023).